



Brochure

# Build Your Enterprise with the Future of Cloud

A complete bundle of end-to-end solutions for a seamless migration to Amazon Redshift and cost-effective management of your data warehouse.



# Build Your Enterprise with the Future of Cloud

Data Modernization is a complex process that requires a migration path, deals with a gamut of technologies, all the while ensuring that business continuity is not impacted. Globally, every business is going through a massive digital change. The pace of transformation has been extremely quick, and every aspect of IT is changing. The cloud has made it possible to achieve infinitely scalable infrastructure with better performance at optimal cost which is a challenge, especially with on-premises infrastructure since the scalability is limited and the operating costs are high.

To drive growth and sustain the top-notch game of the company in the business, it is imperative that enterprises must quickly modernize their existing data landscape by moving to the cloud. The cloud journey is not just about re-platforming or migrating existing on-premises Data Warehouses to the cloud, it is also about re-imagining the potential of data to business. It is necessary to relook at every aspect of Data Warehouse technology including - customer experience, cost structures, use cases, data and application architectures, skill sets and tool sets.

# The Need for a Right Transformation Partner

Even though organizations are aware of the benefits of moving to cloud, they have their own queries and hesitations to transform. At LTI, we understand those queries and strive to provide solutions creating confidence with our customers. Most of the queries are related to Data security, total cost of operation, time invested, business continuity and support from the Transformation partner. The organizations think that it is extremely challenging to do the required quality checks with respect to performance, security, and compliance, without any downtime. Additional challenges can be caused due to the inability of enterprises to do a detailed sizing exercise on their compute, storage, and network requirements.

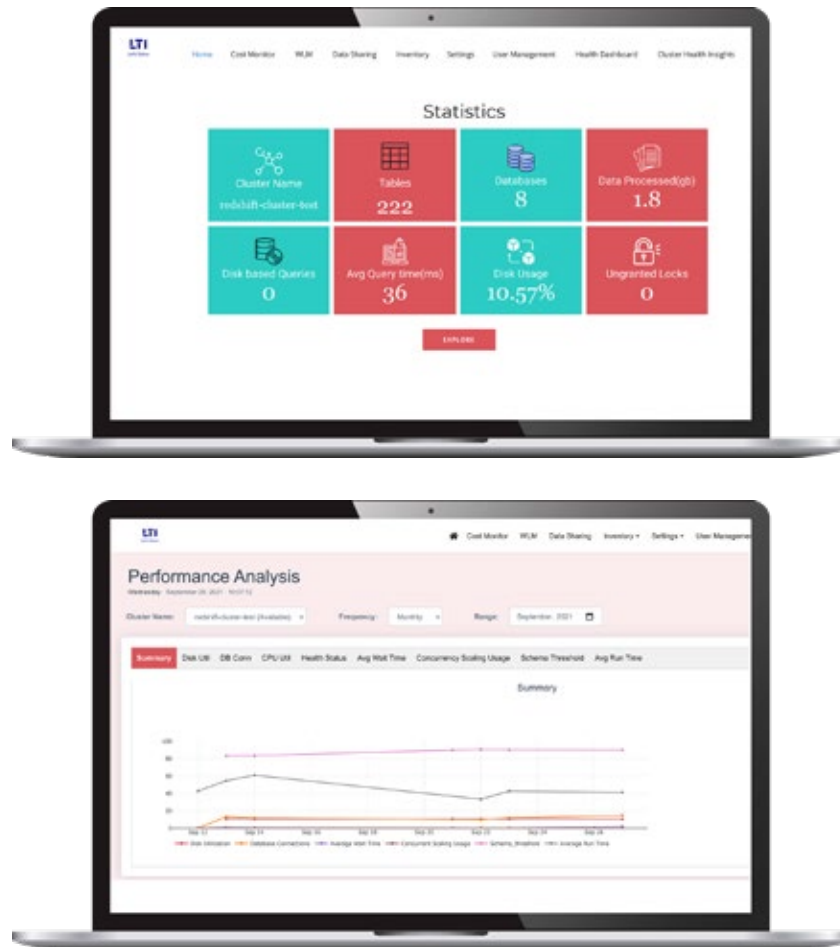
As most enterprises do not have the required migration tools, the frameworks, or the monitoring tools, it can leave them extremely vulnerable to the probability of failed migrations. As an AWS Premier Consulting Partner, LTI provides its clients and customers with the depth of its partnerships and vast experience in cloud, which helps overcome any potential challenges.

For enabling organizations to achieve seamless migration with minimum downtime, LTI has created a portfolio of tools and accelerators. These include:

- **LTI Canvas Glide**
- **LTI Canvas Scarlet**

# LTI Canvas Glide

Canvas Glide helps manage the operational and financial aspects of Amazon Redshift Cluster using GUI tool. Salient features include cost analysis, database insights, data sharing, workload management and user management.



## Benefits of Canvas Glide:

- Provides analysis of cost and usage using historical data
- Provides recommendations on allocation units of parameter groups using historical data
- Facilitates and manages data-sharing to other AWS accounts
- Provides health analysis based on various metrics to provide the recommendation on the cluster resizing

# LTI Canvas Scarlet

Canvas Scarlet is a set of tools that accelerates the journey to AWS. It features to migrate data from on premise to AWS. It has ability to migrate the schemas, data and objects contained in the Database. It also facilitates an automated method of reconciling the migrated data between source and target.

## LTI Canvas Scarlet Tools & Accelerators



### DWH Extractor

- ✓ DWH Extractor tool extracts databases to and from most widely used commercial and open-source databases seamlessly.
  - ✓ Leverages Extraction agents running in parallel to reduce the download time.
- 



### Object Convertor

- ✓ Converts stored procedures and functions to Python-based Spark Framework performing ELT jobs on migrated databases
  - ✓ Uses EMR with spot instances with optimized cost
- 



### Data Transformer

- ✓ Transforms data from raw to curated layer after applying data transformation such as data quality, business rules, partitions, lookups, filters, etc.
  - ✓ All inputs for various transformations integrated as part of the configuration file.
- 



### Data Validator

- ✓ Provides the ability to reconcile data between source and target during migration.
  - ✓ Leverages Spark jobs and multi-threading for parallel execution.
  - ✓ Performs record-to-record validation for the entire database or based on sampling size
- 



### Smart Architekt

- ✓ Creates Infrastructure as Code (IaC) using DevOps process framework based on technical requirements.
- ✓ Provides configurable parameters and values for various AWS services that will be applied during script execution

## Benefits of Canvas Scarlet:

- > **Compatible** with native AWS services
- > **25% efforts saved** by accelerating the migration process
- > **40% reduced time** for migration

# Our Success Stories

LTI has successfully executed more than 75 AWS migrations and other greenfield projects for some of the most elegant and global brands in the world.

### A Global Electric Company:

LTI migrated the Oracle on-premise landscape to AWS Data lake for infinite scalability and ability to handle current & future data loads that helped in 30-50% reduction in IT spends and also 2X improvement in performance.

### A Global Hi-Tech and Networking Major:

LTI helped in rationalization, consolidation & simplification of legacy landscape to a future-ready foundational data platform on AWS by migrating petabytes volume of data in a seamless fashion without affecting the business continuity.

---

LTI (NSE: LTI) is a global technology consulting and digital solutions company helping more than 435 clients succeed in a converging world. With operations in 31 countries, we go the extra mile for our clients and accelerate their digital transformation with LTI's Mosaic platform enabling their mobile, social, analytics, IoT and cloud journeys. Founded in 1997 as a subsidiary of Larsen & Toubro Limited, our unique heritage gives us unrivalled real-world expertise to solve the most complex challenges of enterprises across all industries. Each day, our team of more than 36,000 LTIites enable our clients to improve the effectiveness of their business and technology operations and deliver value to their customers, employees and shareholders. Find more at <http://www.Ltinfotech.com> or follow us at @LTI\_Global.

info@Ltinfotech.com