

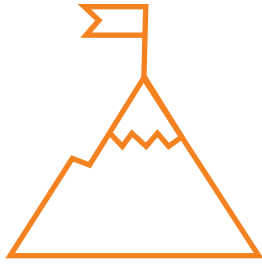


## Case Study

---

# Providing 24x7 Security Operations Centre Support to a US-Based Multinational Mass Media and Entertainment Conglomerate

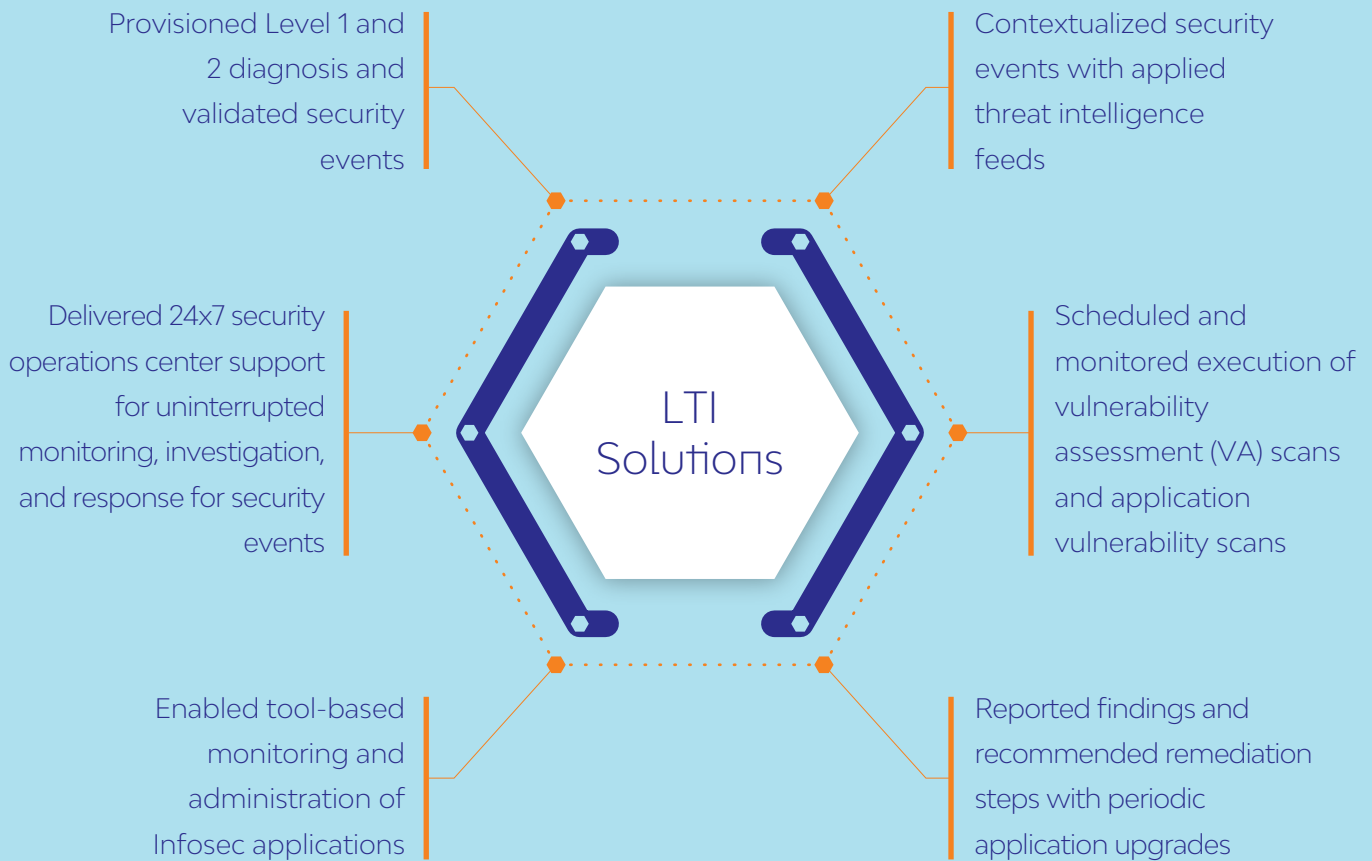
Our client is a global media and entertainment company that delivers premium content and experiences for audiences worldwide through television and streaming channels. The customer is also in the business of studio production, content publishing, organizing live events, selling merchandise, and more.



## Business Challenges

- ☑ Delayed events, alerts, and workflows due to bottlenecks in SIEM/network and a larger attack surface
- ☑ Lack of information about the infrastructure due to limited visibility, blind spots and misplaced access controls for L1/L2 specific activities
- ☑ Increased volume of security alerts causing alert fatigue amongst SOC operators

## LTI Solutions



# Business Benefits



Increased security visibility and minimized breach impact and reporting through 24x7 monitoring



Reduced time to response and accelerated detection and remediation of threats



Reduced alert fatigue, increased SOC operator efficiency, and bolstered deflection of adversarial attacks with contextual threat intelligence reports



Identified and remediated security weaknesses to improve security controls and ensured confidentiality, integrity, and availability (CIA)

LTI (NSE: LTI) is a global technology consulting and digital solutions Company helping more than 400 clients succeed in a converging world. With operations in 31 countries, we go the extra mile for our clients and accelerate their digital transformation with LTI's Mosaic platform enabling their mobile, social, analytics, IoT and cloud journeys. Founded in 1997 as a subsidiary of Larsen & Toubro Limited, our unique heritage gives us unparalleled real-world expertise to solve the most complex challenges of enterprises across all industries. Each day, our team of more than 35,000 LTItes enable our clients to improve the effectiveness of their business and technology operations and deliver value to their customers, employees and shareholders. Follow us at @LTI\_Global

