



Let's Solve



A Larsen & Toubro
Group Company

Brochure

Device Data & Security Management Solution

Cloud-based solution for one-touch IoT device onboarding and management



Overview

As the adoption of IoT continues, organizations struggle to assemble multitude of devices in a digital ecosystem. While connectivity and cloud analytics form an important part of IoT deployment, another important dimension is tracking, monitoring and managing fleet of connected devices.

The organization needs to ensure secure access to devices, monitor health and remotely troubleshoot in case of any problems. With ever increasing scale of IoT deployments, organizations encounter operational challenges associated with physically installing and configuring large numbers of devices. Typical IoT device installation processes have significant manual aspects, which increases the cost and reduces speed of deployment.

Reasons organizations need IoT device management



Mitigate security risks



Simplify deployment & management of downstream applications



Accelerate time-to-market and reduce cost



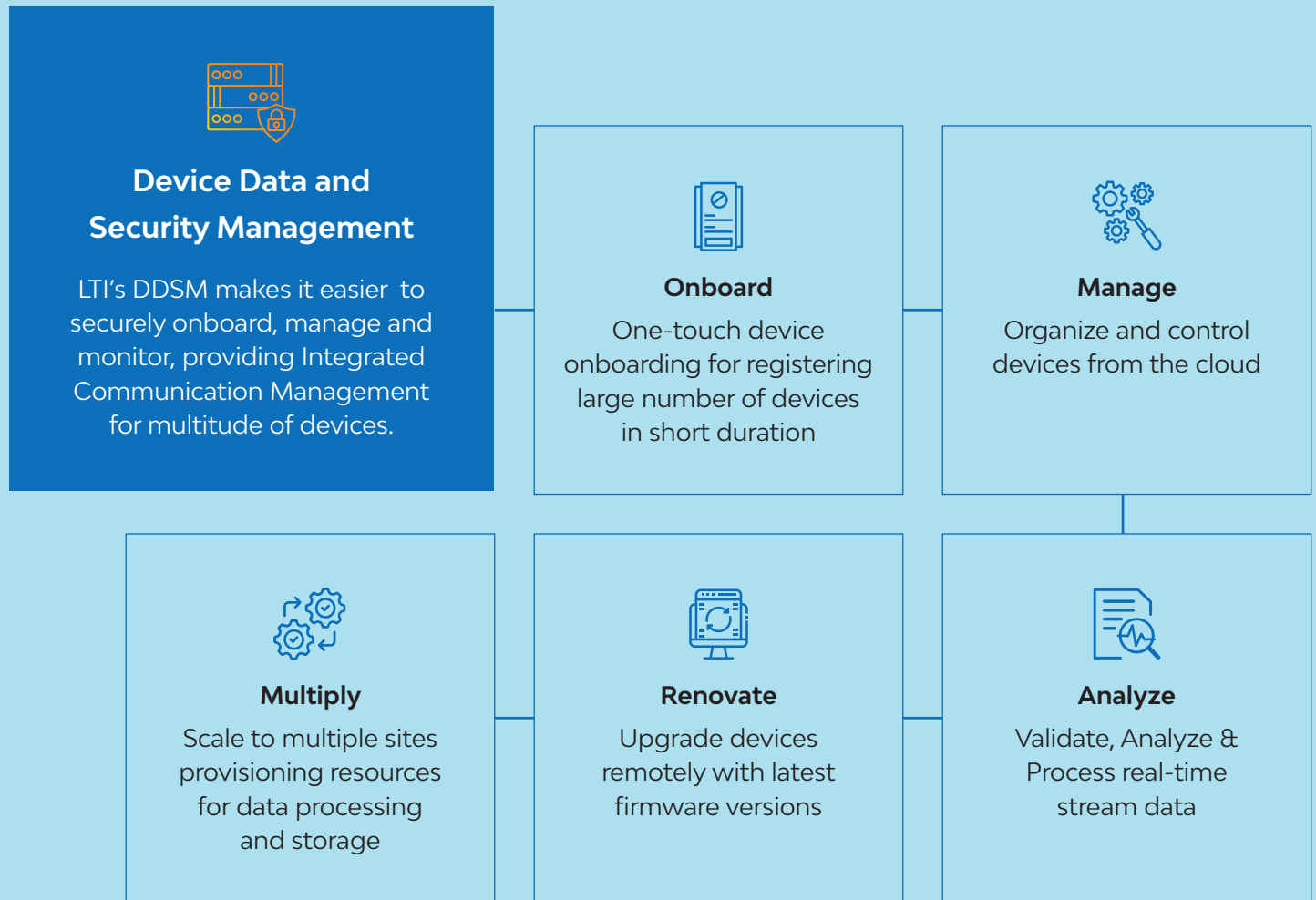
Enable secure device onboarding and offboarding



Streamline network monitoring and remote troubleshooting

Approach to Resolution – The LTI Advantage

LTI's **Device Data and Security Management (DDSM)** is a scalable, Cloud-based solution that enables automated bootstrapping, remote management of IoT devices and exchange information in real-time. It features asset management, device log & health, big data processing and scalability to multiple sites/ locations. It provides **one-touch device on-boarding** that facilitates quick configuration of devices, thereby reducing up to **90%** effort in provisioning.



Solution Features

LTI's DDSM collects and stores data from multiple devices and analyzes it. The IoT devices are connected via standard or proprietary protocols and the solution triggers events based on analytics engine providing insights for data enabled decision making. The solution facilitates an **"Integrated Communication Management"** library to interact with device using different industrial protocols. Key features are of the solution are:



Device Management

Manage, Secure, Control and upgrade devices from the cloud using one-touch on-boarding.



Real-time Data Processing

Validate, Analyze & Process data in real-time stream with enterprise data source routed to ML/Analytics through comprehensive WS/API.



Complex Event Processing

Enable CEP by using models of causality and conceptual hierarchies on real-time data stream, to derive high level inferences about complex events within the business domain.



Multi-tenancy

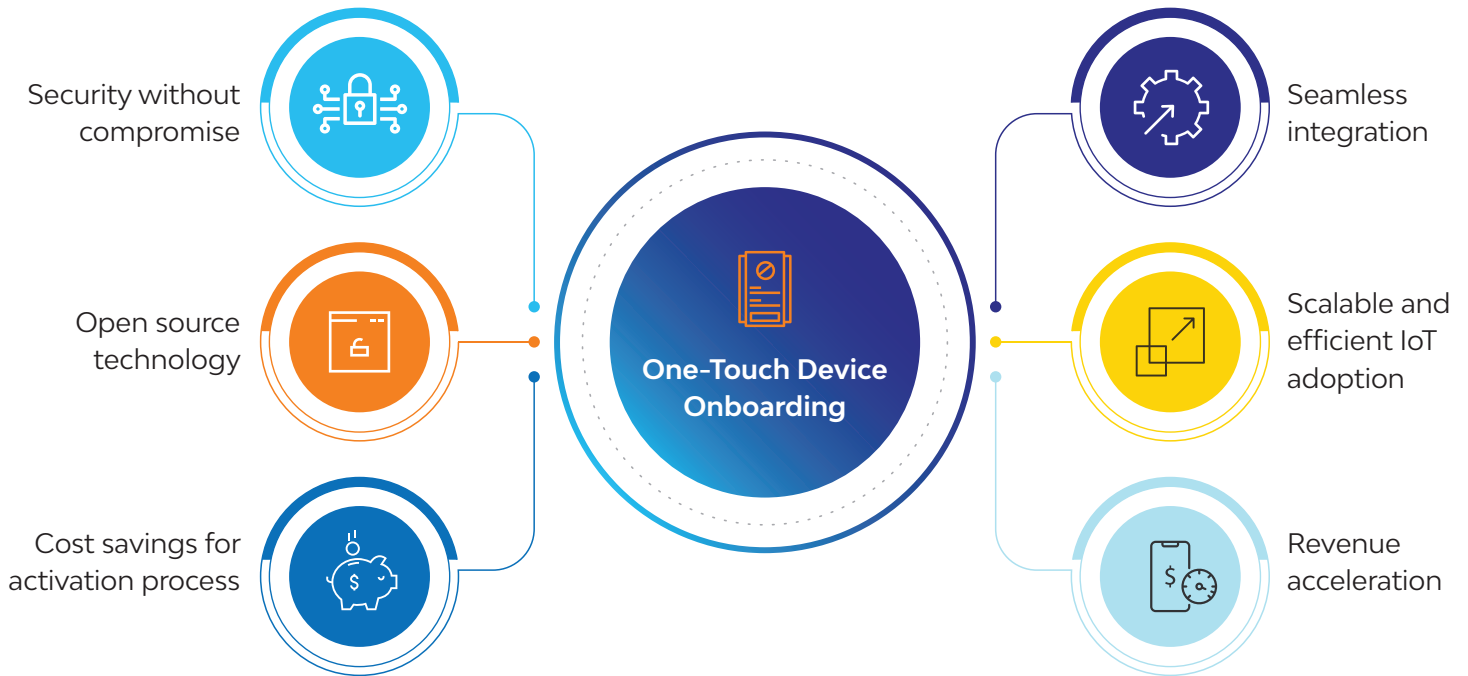
The solution can scale to multiple clients/factories/locations and partition the process & data accordingly, thus enabling balancing the load of processing and storage.



Device Health Monitoring

Efficiently monitor connected devices and collect Operational Logs into cloud for checking the device health.

Business Benefits



LTI (NSE: LTI) is a global technology consulting and digital solutions company helping more than 400 clients succeed in a converging world. With operations in 31 countries, we go the extra mile for our clients and accelerate their digital transformation with LTI's Mosaic platform enabling their mobile, social, analytics, IoT and cloud journeys. Founded in 1997 as a subsidiary of Larsen & Toubro Limited, our unique heritage gives us unrivalled real-world expertise to solve the most complex challenges of enterprises across all industries. Each day, our team of more than 33,000 LTIites enable our clients to improve the effectiveness of their business and technology operations and deliver value to their customers, employees and shareholders. Find more at <http://www.Lntinfotech.com> or follow us at @LTI_Global.