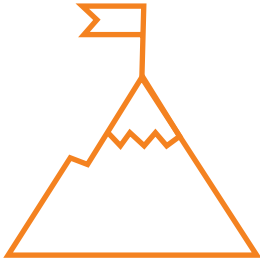




Case Study

Business Transformation through Automation of Forms for US-based P&C Carrier

The client is a leading US-based Specialty Insurance provider for property and casualty, dealing in residential and recreational products.



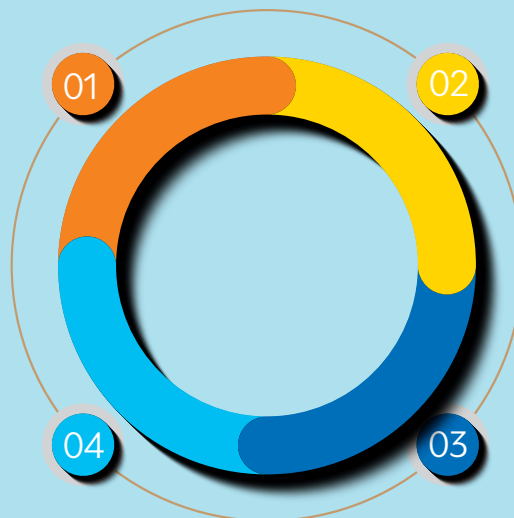
Business Challenges

- ✓ Consumption of huge amount of hours for Form configuration due to multiple configurations needed for each state.
- ✓ Increased defect load due to sheer volume of manual work with limited timelines.

LTI Solutions

Built Automation Tools to create Form configurations by building a Java-based web application for directly updating the xmls in the backend and importing it in the Guidewire environment

Handled all the exceptions by incorporating appropriate Error-handling scenarios



Created reports on all forms configured by generating text files for newly added forms, updated forms and expired forms for respective states

These text files additionally helped in tracking all the changes done after the tool was run

Business Benefits

Web Application reduced almost 95% of manual efforts

The configuration of forms achieved with a couple of user clicks



Time taken to configure policy lines per State-reduced from about 50 hours to 5 hours

Increased accuracy of configuration was achieved with reduced number of defects

LTI (NSE: LTI) is a global technology consulting and digital solutions Company helping more than 400 clients succeed in a converging world. With operations in 31 countries, we go the extra mile for our clients and accelerate their digital transformation with LTI's Mosaic platform enabling their mobile, social, analytics, IoT and cloud journeys. Founded in 1997 as a subsidiary of Larsen & Toubro Limited, our unique heritage gives us unrivalled real-world expertise to solve the most complex challenges of enterprises across all industries. Each day, our team of more than 30,000 LTItes enable our clients to improve the effectiveness of their business and technology operations and deliver value to their customers, employees and shareholders. Find more at <http://www.Ltinfotech.com> or follow us at @LTI_Global.