



Let's Solve

Making Your Working Capital Work for You



LTI Leni for Working Capital Management



A Larsen & Toubro
Group Company

Making Your Working Capital Work for You

As the financial and economic effects of the COVID-19 pandemic continue, enterprises prepare themselves to deal with uncertainties regarding their current and future revenues and cash flows. These challenges require hands-on, agile solutions, which support them by providing access to immediate

insights that help them define and take appropriate actions. Today's finance leaders need adaptability, flexibility, and balance to create the agility required for success. Heavy reliance on manual activities and legacy systems can no longer work to overcome and sustain the current working capital crisis.



LTI Leni- Prioritise, Preserve & Protect **Your Cash Flow**

LTI Leni, for Working Capital Management, can simplify the working capital process and help businesses stakeholders actively evaluate cash flow requirements, develop appropriate actions under various scenarios, and assess potential risks in and to their customer base and supplier network.

Leni combines the power of augmented analytics and automation with NLP and machine learning to streamline accounts receivables and payables, assess inventory stocks, provide potential cash scenario and intelligent recommendations to make complex financial decisions faster.



Revolutionize Your Working Capital with Leni

With Leni, finance executives can gain insight into their cash flows, payables, receivables and inventory and get an in-depth knowledge of the company's current financial situation, including an accurate up-to-date view on the day-to-day and future expected liquidity position to diagnose, predict, prepare and act in real-time.

As Is

Bottlenecks & inefficiencies in manually-intensive cash flow management.

Longer cash management cycles owing to iterative and redundant workflows.

Limited visibility into key trends and industry best practices.

High dependence on complex BI systems and experts to deliver data-driven insights.

1

Real-time insights into current and future cash and liquidity position.

2

Identify '**quick wins**' and long-term working capital improvement opportunities.

3

Understand and track **benchmarks & KPIs** against industry peers.

4

Unlock powerful levers to optimize cash performance with automated analytics interventions.

With Leni

Key Benefits

Boosting **visibility** across the entire working capital spectrum

Enabling **proactive collections**

Identifying **frequent default customers** early and enabling corrective actions

Freeing locked-up cash with **swift recommendations**

Prognosis of **future liquidity** position

Business Impact

~85% reduction in manual activity

~10% DSO reduction and improved liquidity

Improved cash flow monitoring and real-time decision making

Compressed cash conversion cycle with **faster turnover** of receivables and inventories

Unlock the True Potential of Your Working Capital with Leni

Improve Your Collection Strategies

Identify best and worst performing customers and the 'Why' behind non-payments to enhance collection strategies.



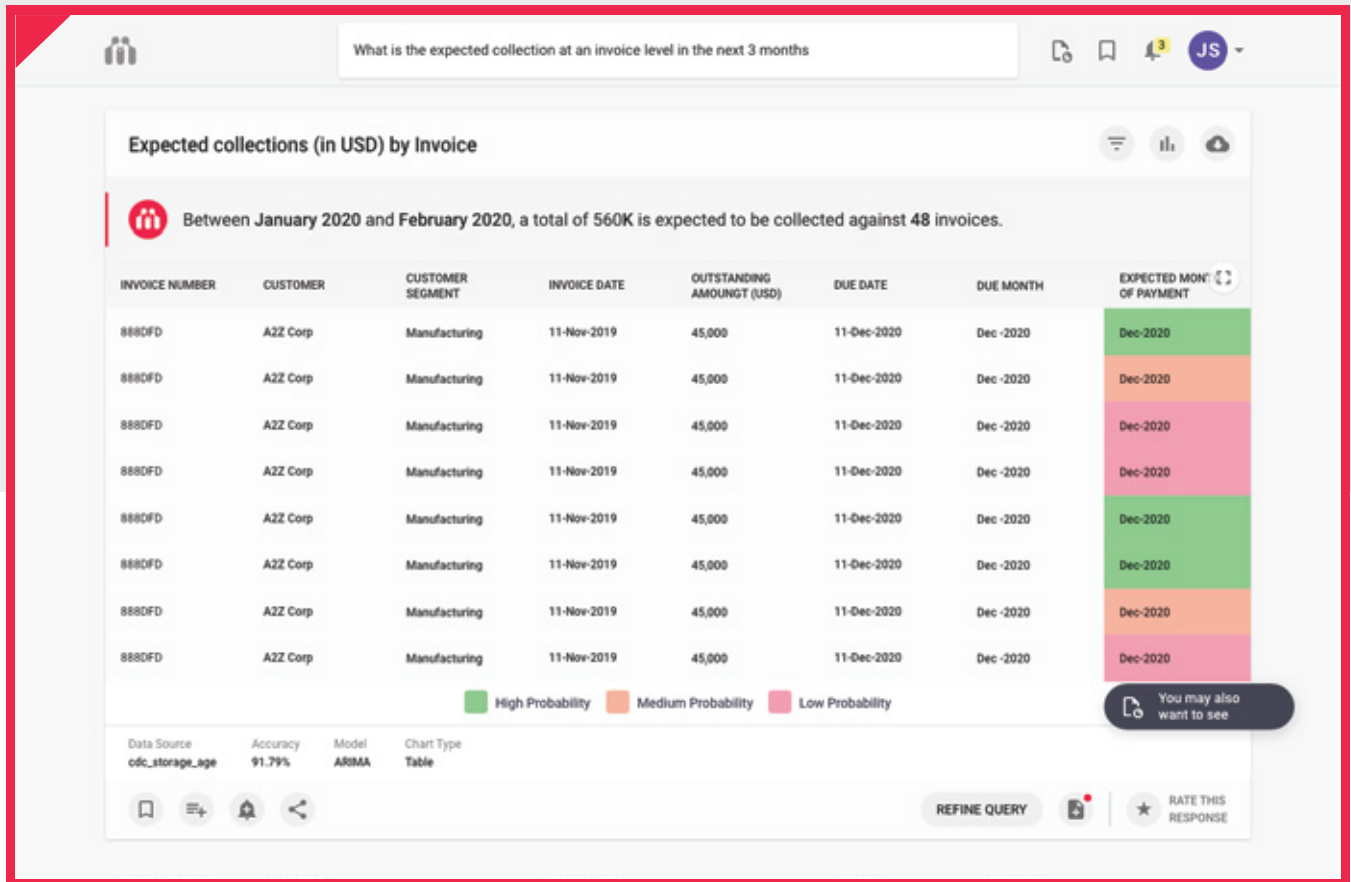
Path to Augmented Intelligence paved by Leni

Leni's augmented intelligence simplifies business challenges related to Working Capital management to proactively assess cash reserves.

Leni does all the heavy lifting on your Accounts Receivables, Payables and Inventory data to give you actionable insights in seconds sans human intervention or bias.

Assess and Strengthen Your Liquidity Position

Analyze your cash collection trends, payment cycles, DSO and DPO variances and get accurate predictions on expected collections or overdues to pre-empt your future liquidity position.



Proactive analysis of Overdues and Collections

Capture overdue or expected collection amounts against open invoices across customers or segments to determine high-risk and future impact.



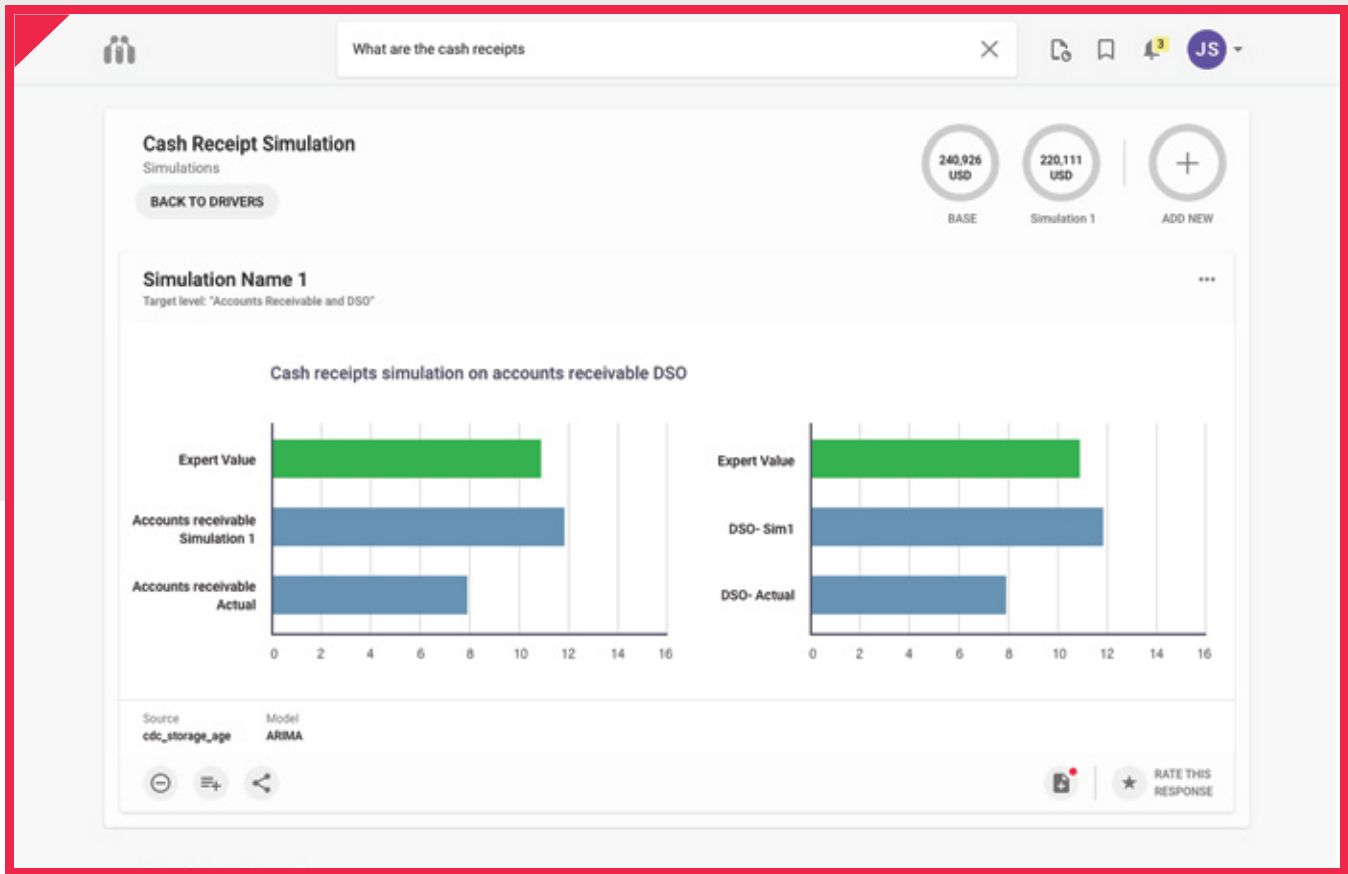
Embracing Uncertainty Amidst Disruption

Leni's flexible approach to cash forecasting with accurate simulations on expected collections and overdues helps identify high risk areas and potential impact.

Empowered with cognitive insights, finance leaders can design effective cash management strategies - freeing up much need capital in uncertain and challenging times.

Future-proof Your Cash Collections

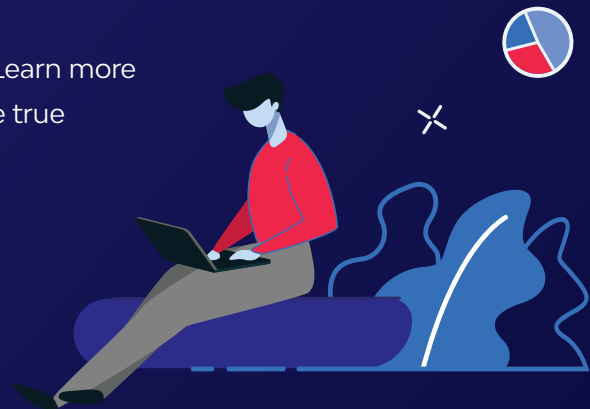
Simulate and predict the impact of crisis scenarios as the situation unfolds to diagnose current performance as well as future cash collections.



Ready to put your Working Capital on auto-pilot mode? Learn more about how you can activate your working capital with the true power of artificial intelligence and machine learning.



[Request for Demo](#)



LTI (NSE: LTI) is a global technology consulting and digital solutions Company helping more than 400 clients succeed in a converging world. With operations in 31 countries, we go the extra mile for our clients and accelerate their digital transformation with LTI's Mosaic platform enabling their mobile, social, analytics, IoT and cloud journeys. Founded in 1997 as a subsidiary of Larsen & Toubro Limited, our unique heritage gives us unrivalled real-world expertise to solve the most complex challenges of enterprises across all industries. Each day, our team of more than 30,000 LTItes enable our clients to improve the effectiveness of their business and technology operations and deliver value to their customers, employees and shareholders. Find more at <http://www.Lntinfotech.com> or follow us at @LTI_Global.

Email: info@Lntinfotech.com



A Larsen & Toubro
Group Company