



Let's Solve

BigArch™

Data Archival: Improve
Data Compliance & Optimize
Costs



A Larsen & Toubro
Group Company

Automation and growing IT penetration in every industry is generating massive amounts of data, which leads to increased cost of managing and storing data. This has forced Data Architects & System Designers to adopt better archival solutions enhancing efficiency and cost optimization.

Data Archival, the Modern Way

BigArch™ is Hadoop-based archival solution developed by LTI. This solution allows data to be moved from a high-end storage system to a low-cost system, for optimum level retrieval without any licensing cost. BigArch™ ensures faster retrieval from the archival store through a query mechanism. This solution is addressed by an archival wizard when configured once, and can be run automatically at any time. Any structural changes in the data can be detected and changed in the archival system. LTI has an extensive experience supporting the implementation of massive data storage solutions.

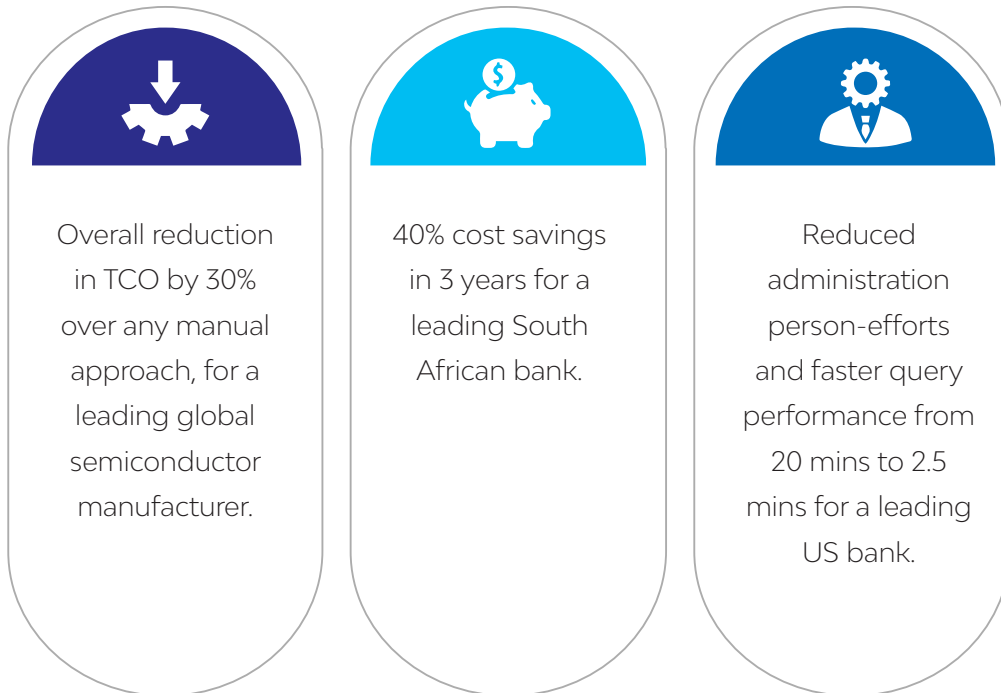
Key Features:

- **Schema Evolution:** Archival process supports evolving schema and easily updates new schema.
- **Configurable & Wizard-based:** Supports different source database systems like SQL server, MySQL, Oracle, Teradata and CSV files also. User can also choose from different Hadoop distributions like Cloudera, Mapr, Hortonworks, Amazon EMR and Microsoft HDInsight.
- **Archival Policy Management:** Helps in creating archival rules to archive subset of data from the entire table.
- **Data Purging Management:** Helps user automate data purging activity from the archival store after compliance period is over.
- **Data Retention & Restoration Management:** Creates & modifies data retention rules. Also, has trace-back functionality to retrieve, search and query archived data.
- **Record Reconciliation:** Data quality is checked once data is archived using record reconciliation feature. If reconciliation status fails, then data will be deleted from the archival store for that load.
- **Legal Hold Management:** User can hold any record from purging if any litigation is going on for that particular record.
- **Version Management:** User can retrieve data from a specific version and track version change.

Business Benefits:



Client Benefits



LTI (NSE: LTI, BSE: 540005) is a global technology consulting and digital solutions Company helping more than 300 clients succeed in a converging world. With operations in 27 countries, we go the extra mile for our clients and accelerate their digital transformation with LTI's Mosaic platform enabling their mobile, social, analytics, IoT and cloud journeys. Founded in 1997 as a subsidiary of Larsen & Toubro Limited, our unique heritage gives us unrivaled real-world expertise to solve the most complex challenges of enterprises across all industries. Each day, our team of more than 24,000 LTIites enable our clients to improve the effectiveness of their business and technology operations, and deliver value to their customers, employees and shareholders. Find more at www.Ltinfotech.com or follow us at @LTI_Global