



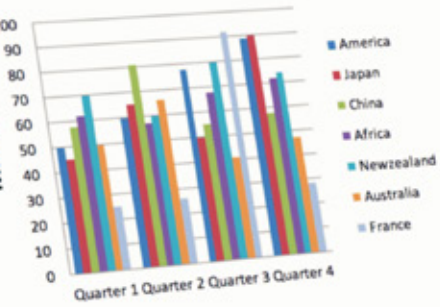
Let's Solve

# Case Study

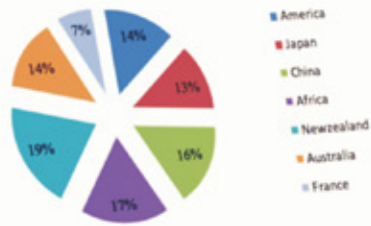
Local & Global Regulatory Insight  
& Analytics for Leading Global Bank

## Finance Report

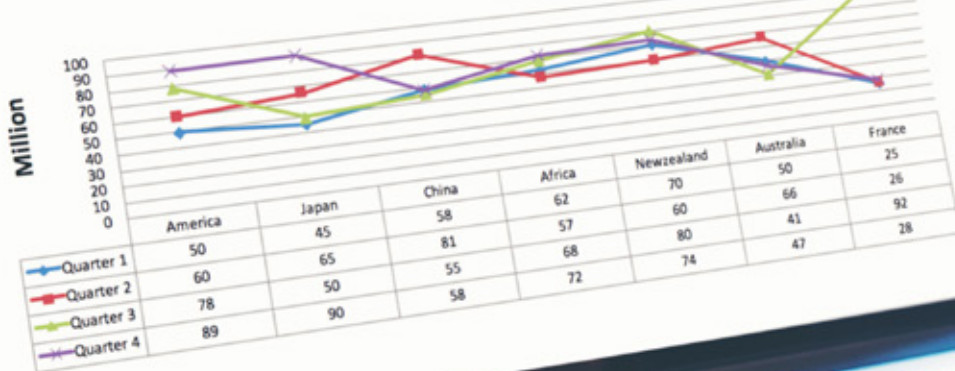
### Summary



### Summary



### Summary



A Larsen & Toubro  
Group Company

## Client

Leading Global Bank headquartered in New York.

## Challenges

Lack of consistency in preparation of regulatory reports, untimely delivery of reports to government agencies. Each region had their own rules defined for regulatory reporting, and need for a generic reporting platform.

## Scope

Create an end-to-end automated platform with standardized data, along with the goal to receive data from a common source, and have single reporting platform for various regions. Multiple in-country implementations, and maintenance & support for existing regulatory reports.

## LTI Solution

Data Acquisition framework was designed to get data from various source systems. Master Data Management rules engine was built to give flexibility to end users to define rules at their end.

## Business Benefits Delivered

- E2E automated and standardized platform for data which minimized the need of manual adjustments data.
- 60% effort reduction of creation of new regulatory reports.
- Highly sophisticated Business Rules Engine for accurate regulatory reporting across regions.

---

LTI (NSE: LTI) is a global technology consulting and digital solutions company, helping more than 250 clients succeed in a converging world. With operations in 27 countries, we go the extra mile for our clients and accelerate their digital transformation with LTI's Mosaic platform, enabling their mobile, social, analytics, IoT and cloud journeys. Founded 20 years ago as the information technology division of the Larsen & Toubro Limited, our unique heritage gives us unrivaled real-world expertise to solve the most complex challenges of enterprises across all industries. Each day, our team of more than 20,000 LTItes enable our clients to improve the effectiveness of their business and technology operations, and deliver value to their customers, employees and shareholders. Find more at [www.Ltinfotech.com](http://www.Ltinfotech.com) or follow us at [@LTI\\_Global](https://twitter.com/LTI_Global)

[info@Ltinfotech.com](mailto:info@Ltinfotech.com)