



Let's Solve

Case Study

Fleet Management
Solution for France-based
Industrial Company



A Larsen & Toubro
Group Company

Client

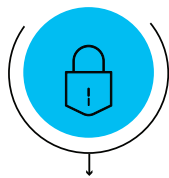
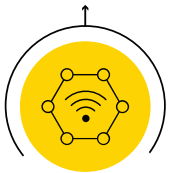
France-based Industrial Company

Challenges

Fleet Management Solution for Real-time & Connected Shipment Visualization

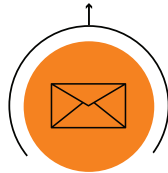
LTI Solution

IoT-based & mobile-enabled, real-time tracking system

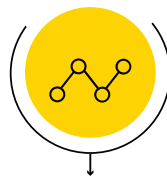


App-based safety tracking- driving behaviour & gamification

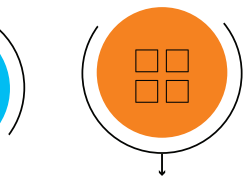
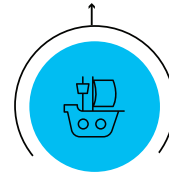
Real-time, SMS-based solution



Real-time, SMS-based solution



Analytics for smart decision on vendor selection & fleet utilization



Visual Cargo-IoT-based Fleet management solution

Business Benefits Delivered

- Low cost, scalable, future-ready solution
- Improved customer satisfaction
- Optimized cash flow , real-time proof of delivery
- Safer drives with preventive measures

LTI (NSE: LTI, BSE: 540005) is a global technology consulting and digital solutions Company helping more than 350 clients succeed in a converging world. With operations in 30 countries, we go the extra mile for our clients and accelerate their digital transformation with LTI's Mosaic platform enabling their mobile, social, analytics, IoT and cloud journeys. Founded in 1997 as a subsidiary of Larsen & Toubro Limited, our unique heritage gives us unrivaled real-world expertise to solve the most complex challenges of enterprises across all industries. Each day, our team of more than 28,000 LTItes enable our clients to improve the effectiveness of their business and technology operations, and deliver value to their customers, employees and shareholders. Find more at www.Ltinfotech.com or follow us at [@LTI_Global](https://twitter.com/LTI_Global)

info@Ltinfotech.com



A Larsen & Toubro Group Company